

A Comparative Study on Data Mining Applications

Brijesh Kumar Bhardwaj

Department of MCA, Dr. R. M. L. Avadh University, Ayodhya, India

DOI: <https://doi.org/10.26438/ijcse/v7i2.902904> | Available online at: www.ijcseonline.org

Accepted: 13/Feb/2019, Published: 28/Feb/2019

Abstract— Data mining is broadly utilized in assorted territories. There is various business data mining framework accessible today but there are numerous difficulties in this field. This paper explains use of new terminology (decision tree) in educational data mining. Decision tree are used the data comparison with data mining capability. It helps prior in distinguishing the dropouts and understudies who require exceptional consideration and enable the educator to give suitable exhorting/advising.

Keywords— Data Mining Applications, Decision tree, Classifications.

I. INTRODUCTION

Understudies are fundamental resources of colleges/Institutions. The understudies' execution assumes a vital job in delivering the best quality alumni and post-graduates who will end up extraordinary pioneer and labor for the nation along these lines in charge of the nation's financial and social advancement [1]. The execution of understudies in colleges ought to be a worry not exclusively to the overseers and teachers, yet additionally to companies in the work advertise.

Scholastic accomplishment is one of the primary components considered by the business in enrolling specialists particularly the crisp alumni [5]. In this manner, understudies need to put the best exertion in their examination to get a decent evaluation with the end goal to satisfy the business' interest [4, 7]. The coming of data innovation in different fields has lead the expansive volumes of data stockpiling in different organizations like understudies' data, instructors' data, graduated class data, asset data and so on. The data gathered from various applications require legitimate technique for separating information from expansive archives for better basic leadership.

II. KNOWLEDGE DISCOVERY PROCESS

Data mining is a noteworthy order that has establishment in measurements. Data mining has risen with the end goal to reveal the useful data in the databases, to evacuate excess data, and to accomplish exact data in the quickest conceivable way [2]. Data mining makes it simpler to scan for an arrangement of guidelines inside a lot of data with the end goal to discover a few expectations about what's to come

[3, 8]. It likewise helps concentrate and utilize profitable data from a lot of data. Data mining, or, in other words, fascinating and valuable procedure of extricating expansive sum data comprises of seven stages as a piece of the Knowledge Discovery Process as appeared in Fig. 1.

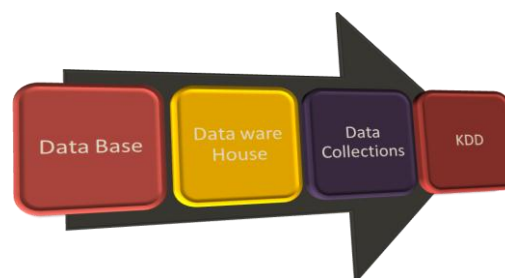


Figure 1. KDD Process

III DATA INTERPRETATIONS

In present day's instructive framework, an understudy's execution is controlled by the inner appraisal and end semester examination. The inner appraisal is done by the instructor dependent on understudy's execution in instructive exercises, for example, class test, course, assignments, general capability, participation and lab work. The end semester examination is one that is scored by the understudy in semester examination [6]. Every understudy needs to get least stamps to pass a semester in inward and additionally end semester examination. The data have taken from MCA students of V B S Purvanchal University Jaunpur in session 2008 to 2011. The classification matrix has been presented in Table 1, 2, 3 which compared the actual and predicted classifications.

Table 1 Classification Matrix based on ID 3

ESM	PREDICTED				
		1	2	3	F
ACTUAL	1	8	3	0	0
	2	4	6	2	0
	3	0	4	7	2
	F	0	1	1	4

Table 2 Classification Matrix based on C 4.5

ESM	PREDICTED				
		1	2	3	F
ACTUAL	1	8	4	2	0
	2	3	8	2	1
	3	4	4	4	1
	F	0	1	5	1

Table 2 Classification Matrix based on CART

ESM	PREDICTED				
		1	2	3	F
ACTUAL	1	9	3	2	0
	2	2	10	2	0
	3	2	4	5	2
	F	0	1	3	3

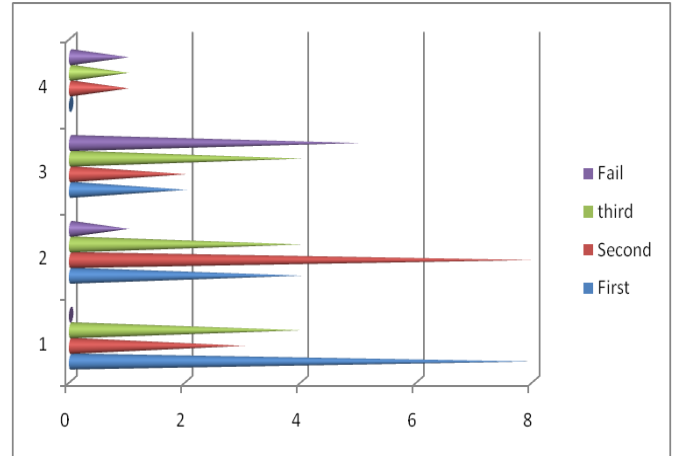


Figure 2 Compare the C 4.5 Valuation

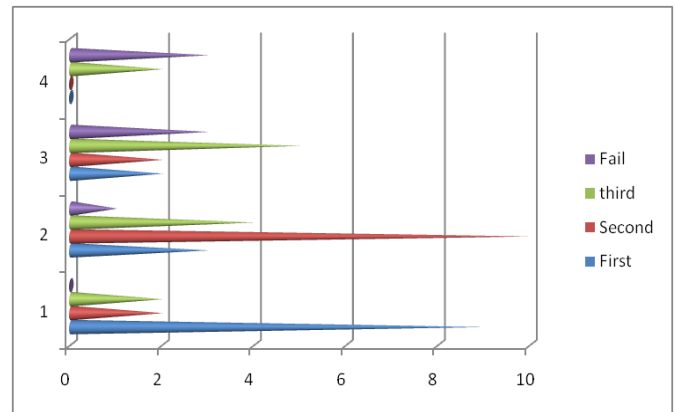


Figure 3 Compare the CART Valuation

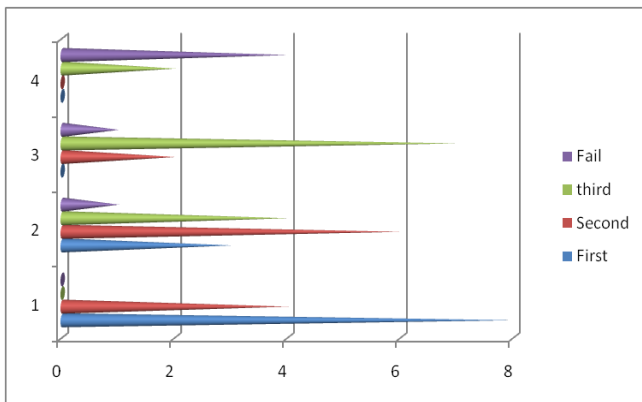


Figure 1 Compare the ID 3 Valuation

IV. CONCLUSION

Data Mining is picking up its fame in all utilizations of genuine world. One of the data mining systems i.e., arrangement is an intriguing point to the analysts as it is precisely and proficiently groups the data for information revelation. Choice trees are so mainstream since they create order decides that are anything but difficult to translate than other order techniques. Regularly utilized choice tree classifiers are considered and the analyses are directed to locate the best classifier for Student data to anticipate the understudy's execution at last semester examination. The exploratory outcomes demonstrate that CART is the best calculation for grouping of data.

REFERENCES

- [1]. Q. A. AI-Radaideh, E. W. AI-Shawakfa, and M. I. AI-Najjar, "Mining student data using decision trees", International Arab Conference on Information Technology (ACIT'2006), Yarmouk University, Jordan, 2006.
- [2]. U. K. Pandey, and S. Pal, "A Data mining view on class room teaching language", (IJCSI) International Journal of Computer

Science Issue, Vol. 8, Issue 2, pp. 277-282, ISSN: 1694-0814, 2011.

- [3]. Shaeela Ayesha, Tasleem Mustafa, Ahsan Raza Sattar, M. Inayat Khan, "Data mining model for higher education system", European Journal of Scientific Research, Vol.43, No.1, pp.24-29, 2010.
- [4]. M. Bray, "The shadow education system: private tutoring and its implications for planners", (2nd ed.), UNESCO, PARIS, France, 2007.
- [5]. J. R. Quinlan, "Introduction of decision tree", Journal of Machine learning", : pp. 81-106, 1986.
- [6]. Z. J. Kovacic, "Early prediction of student success: Mining student enrollment data", Proceedings of Informing Science & IT Education Conference 2010
- [7]. Jadhav, R. J. (2011). Churn Prediction in Telecommunication Using Data Mining Technology. International Journal of Advanced Computer Science and Applications - IJACSA, 2(2), 17-19.
- [8]. Firdhous, M. F. M. (2010). Automating Legal Research through Data Mining. International Journal of Advanced Computer Science and Applications - IJACSA, 1(6), 9-16.

Authors Profile

Dr. Brijesh Kumar Bhardwaj is Assistant Professor in the Department of MCA, Dr. R. M. L. Avadh University Faizabad India. He obtained his M.C.A degree from Dr. R. M. L. Avadh University Faizabad (2003) and M.Tech. in Computer Science and Engineering from K.N.I.T. Sultanpur and obtained Ph.D degree. His area of research is Software Engineering and Data Mining. Dr. Bhardwaj published numerous articles, several papers in refereed journals and conferences.

